



**TISCA TIARA**

swiss  carpets

**TISCA COLORMETALLIC**



Design 05087 T 788 blau / 170 silber

# TISCA COLORMETALLIC

Mit der Kollektion COLORMETALLIC von TISCA liegt eine Dessin-Auswahl vor, für deren Schmuckfarben metallfarbene Garne auf vier ausgewählten Fondfarben eingesetzt werden.

Schmuck- und Fondfarben können aber auch individuell bestimmt werden.

Alternativ zu den vorliegenden Fondfarben können alle 33 Colorits der Qualität COLORRIPS 410 ausgewählt werden.

Als Schmuckfarben sind 12 Colorits möglich.

Alle Dessins sind ab 150 m<sup>2</sup> lieferbar, kleinere Mengen liefern wir auf Anfrage.

Die Lieferzeit beträgt ca. 6–8 Wochen.

Für Ihre individuellen Bedürfnisse beraten wir Sie gerne.

The collection COLORMETALLIC by TISCA offers a new design selection featuring jewel tones with multi-colored metallic yarns embedded in four base colors.

Jewel- and base colors can be inter-changed individually.

In addition to the base colors you can choose any of the 33 standard colors of our quality COLORRIPS 410.

12 colorways are available for the jewel tones.

All designs are available from 150m<sup>2</sup> (180 s/y). Smaller yardages upon request.

Lead time is approximately 6–8 weeks.

We'll be happy to help you with any individual requirement.

La collezione COLORMETALLIC de TISCA propose un choix de motifs qui se composent de couleurs de décor employant des fils aux teintes métalliques sur quatre couleurs de fond sélectionnées.

Les couleurs de décor et de fond peuvent cependant également être définies individuellement.

A la place des couleurs de fond proposées, il est possible d'opter pour n'importe lequel des 33 coloris de la qualité COLORRIPS 410.

12 coloris sont envisageables en tant que couleurs de décor.

Tous les motifs sont livrables à partir de 150 m<sup>2</sup> nous livrons des quantités moindres sur demande.

Le délai de livraison est de 6 à 8 semaines environ.

Nous vous conseillons volontiers en cas de besoins particuliers.

La collezione COLORMETALLIC di TISCA presenta una scelta di disegni la cui decorazione è stata realizzata utilizzando fili dai toni metallici su quattro colori di sfondo selezionati.

I colori della decorazione e dello sfondo possono anche essere scelti singolarmente.

In alternativa ai colori dello sfondo esistenti, è possibile scegliere tra le 33 colorazioni di qualità COLORRIPS 410.

Per il motivo ornamentale sono disponibili 12 colorazioni

Tutti i disegni sono disponibili fino a 150 m<sup>2</sup> quantità più piccole vengono fornite su richiesta.

Il tempo di consegna è di 6–8 settimane.

Siamo a vostra disposizione per una consulenza personalizzata.

# TISCA COLORMETALLIC / Design 05057 TV

Rapport: Länge ca. 14 mm  
Breite ca. 10 mm

rapport: longueur env. 14 mm  
largeur env. 10 mm

repeat: length approx. 14 mm  
width approx. 10 mm

rapporto: lunghezza ca. 14 mm  
larghezza ca. 10 mm



235 schwarz / 5011 sand



788 blau / 5015 türkis



701 basalt / 5010 beige



402 mocca / 5011 sand



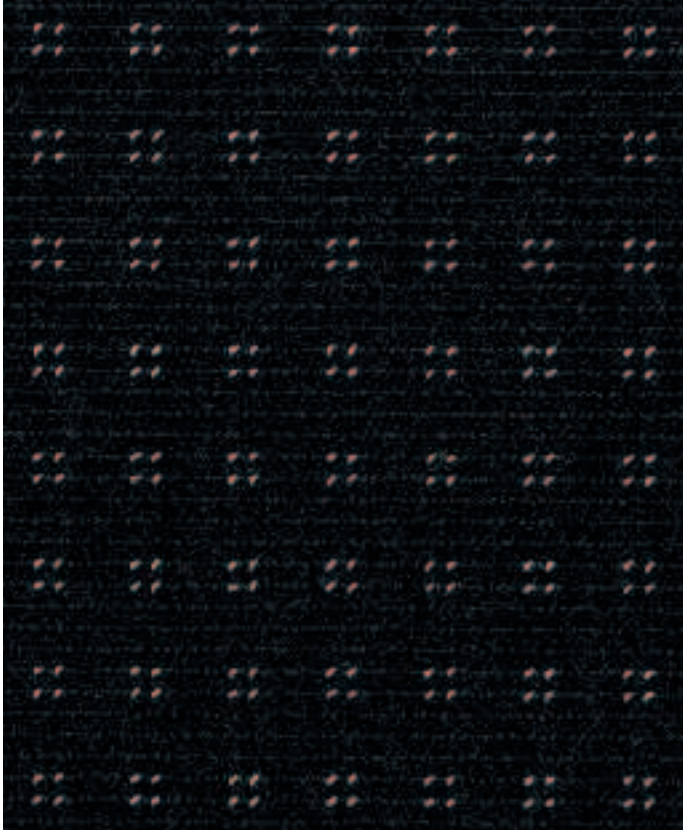
# TISCA COLORMETALLIC / Design 05173 TV

Rapport: Länge ca. 30 mm  
Breite ca. 30 mm

rapport: longueur env. 30 mm  
largeur env. 30 mm

repeat: length approx. 30 mm  
width approx. 30 mm

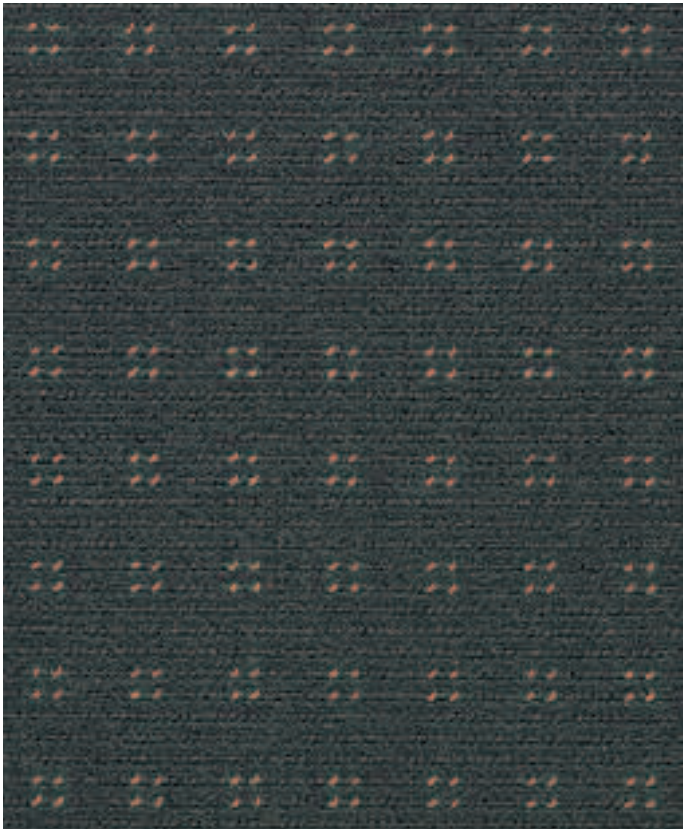
rapporto: lunghezza ca. 30 mm  
larghezza ca. 30 mm



235 schwarz / 5012 hellgrau



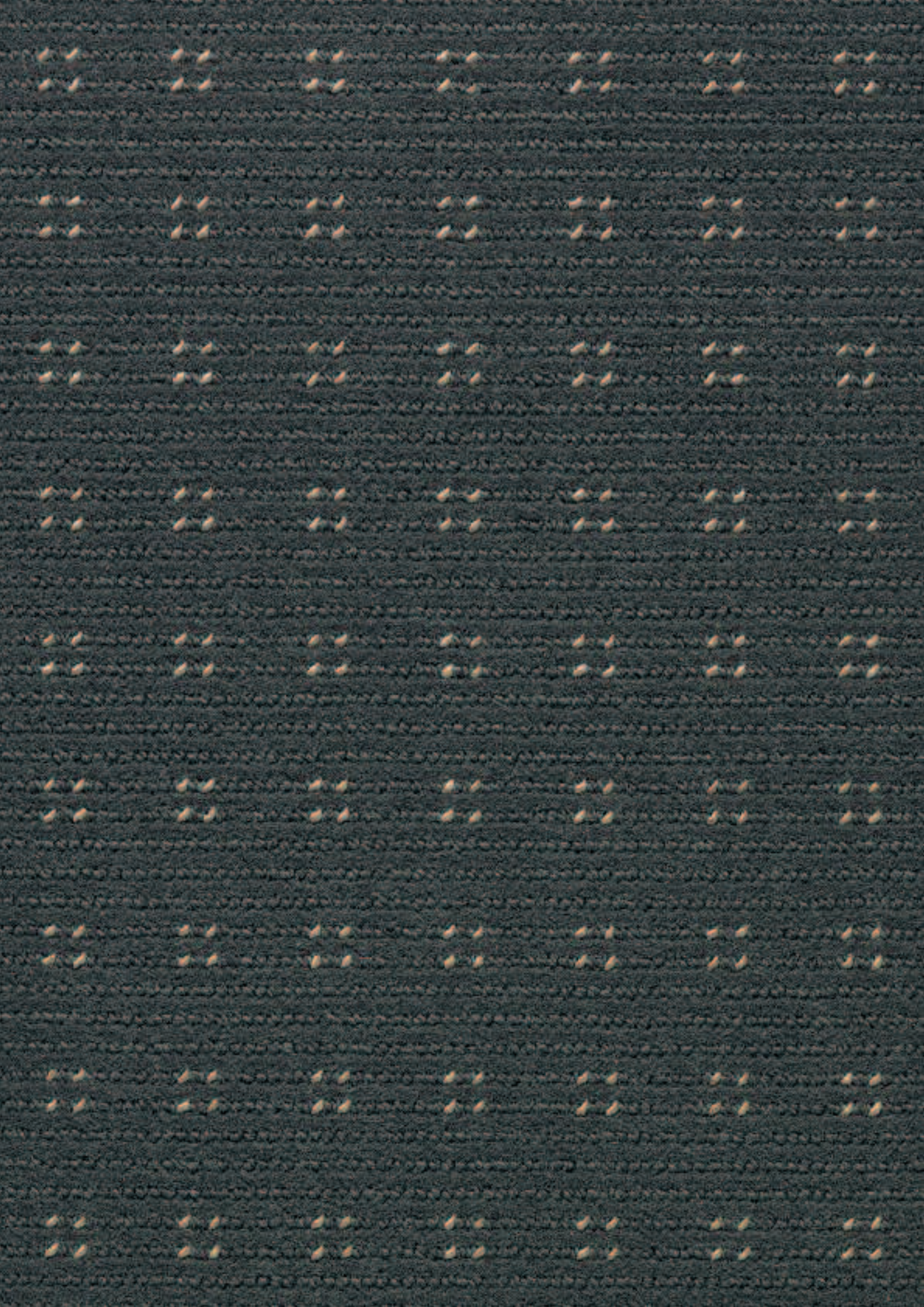
788 blau / 5015 türkis



701 basalt / 5010 beige



402 mocca / 5011 sand



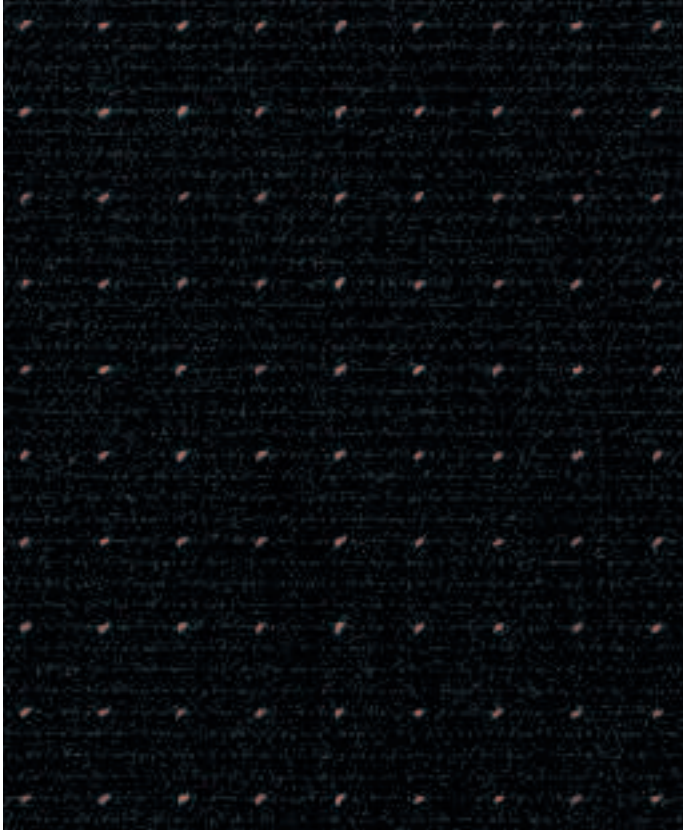
# TISCA COLORMETALLIC / Design 05172 TV

Rapport: Länge ca. 30 mm  
Breite ca. 20 mm

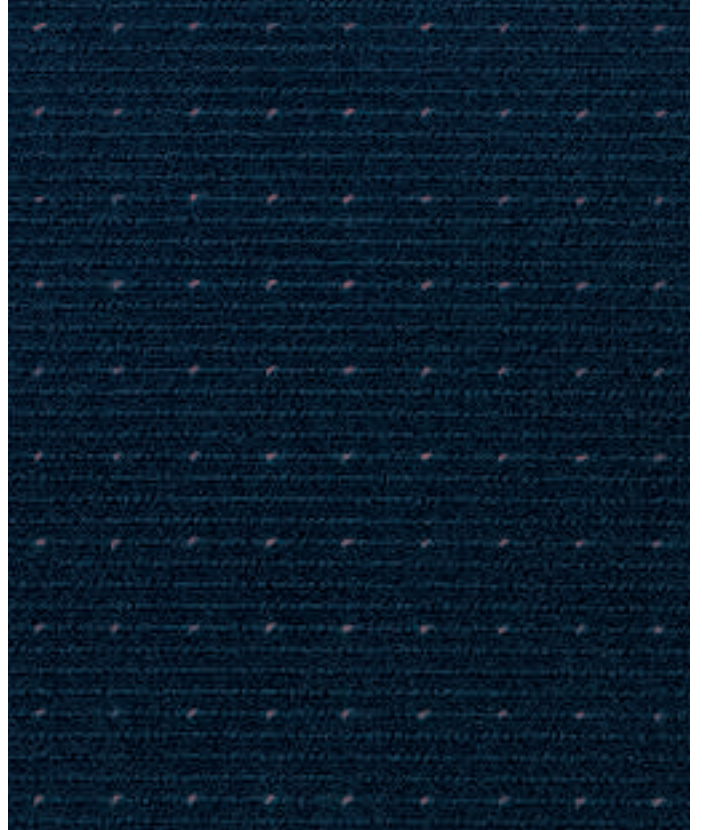
rapport: longueur env. 30 mm  
largeur env. 20 mm

repeat: length approx. 30 mm  
width approx. 20 mm

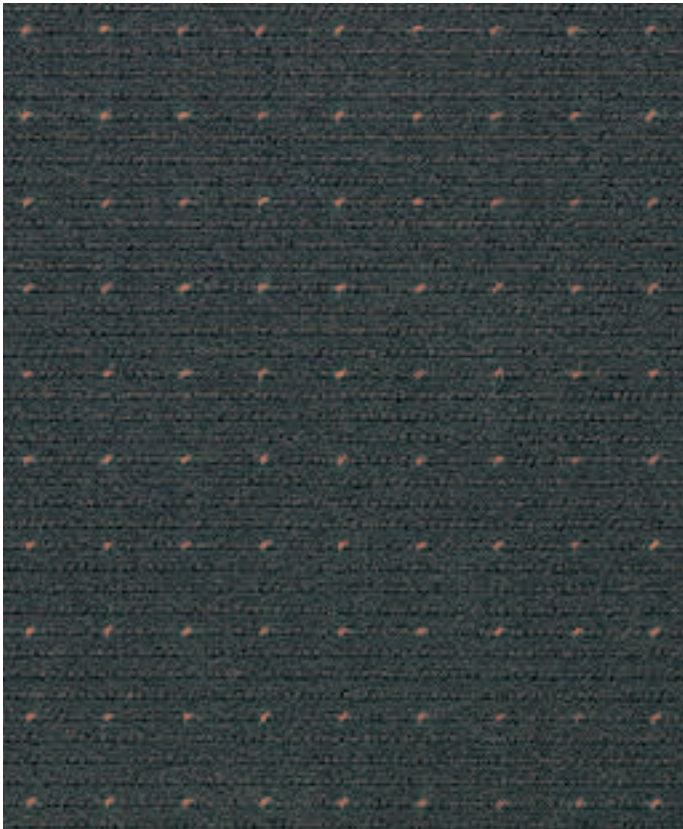
rapporto: lunghezza ca. 30 mm  
larghezza ca. 20 mm



235 schwarz / 5012 hellgrau



788 blau / 5015 türkis



701 basalt / 5010 beige



402 mocca / 5011 sand





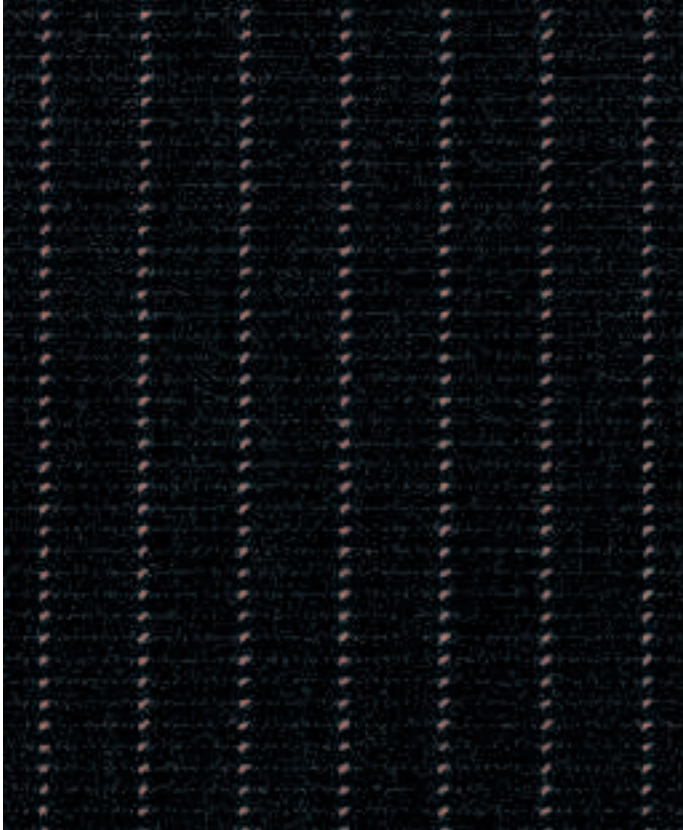
# TISCA COLORMETALLIC / Design 05174 TV

Rapport: Länge ca. 7 mm  
Breite ca. 30 mm

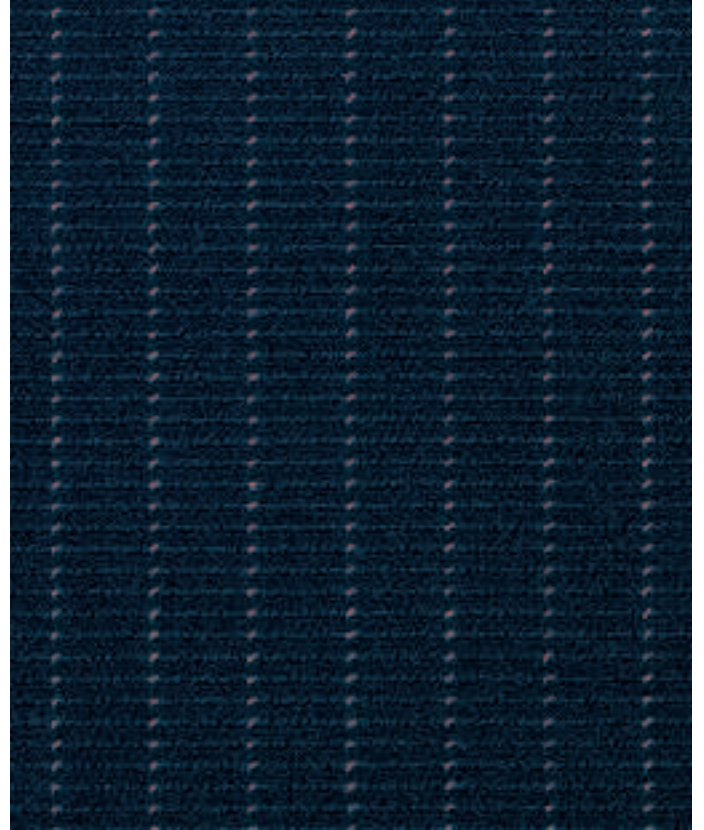
rapport: longueur env. 7 mm  
largeur env. 30 mm

repeat: length approx. 7 mm  
width approx. 30 mm

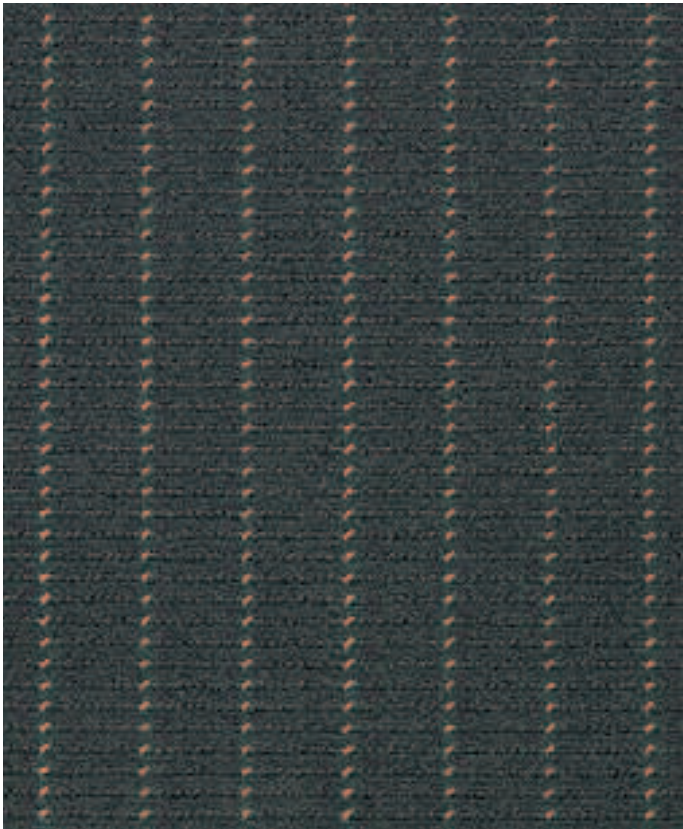
rapporto: lunghezza ca. 7 mm  
larghezza ca. 30 mm



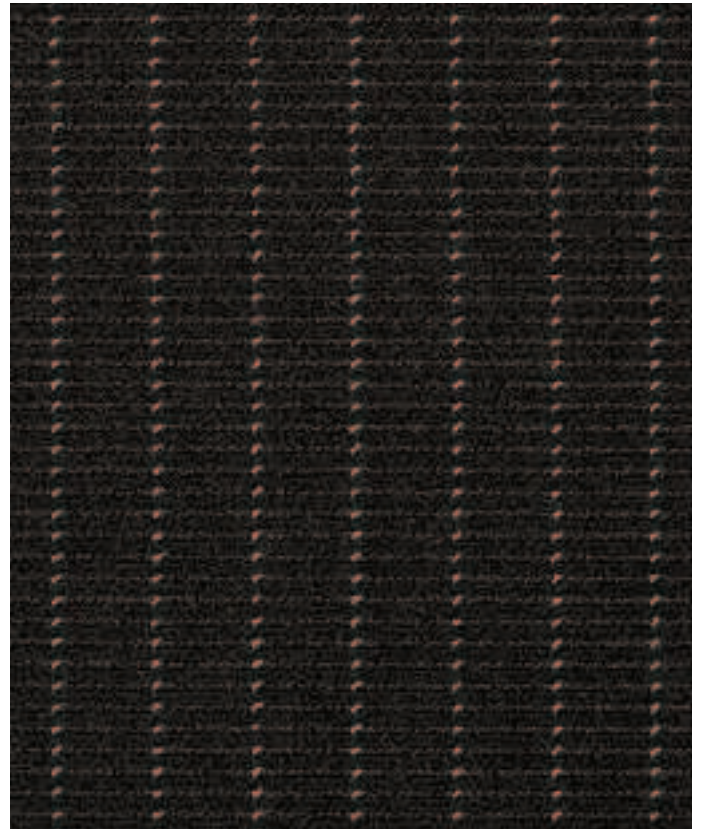
235 schwarz / 5012 hellgrau



788 blau / 5015 türkis



701 basalt / 5010 beige



402 mocca / 5011 sand



# TISCA COLORMETALLIC / Design 05175 TV

Rapport: Länge ca. 200 mm  
Breite ca. 100 mm

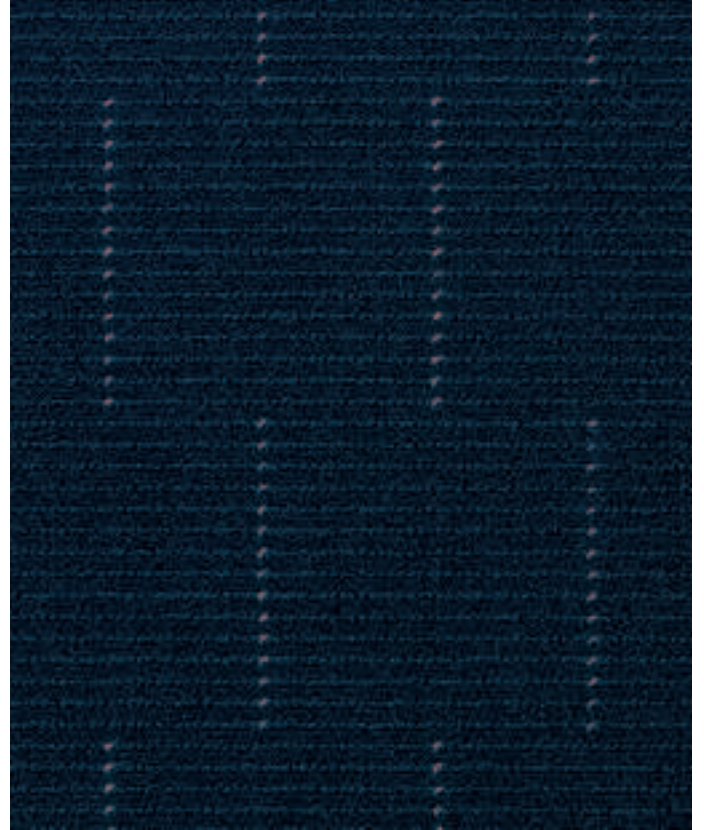
rapport: longueur env. 200 mm  
largeur env. 100 mm

repeat: length approx. 200 mm  
width approx. 100 mm

rapporto: lunghezza ca. 200 mm  
larghezza ca. 100 mm



235 schwarz / 5012 hellgrau



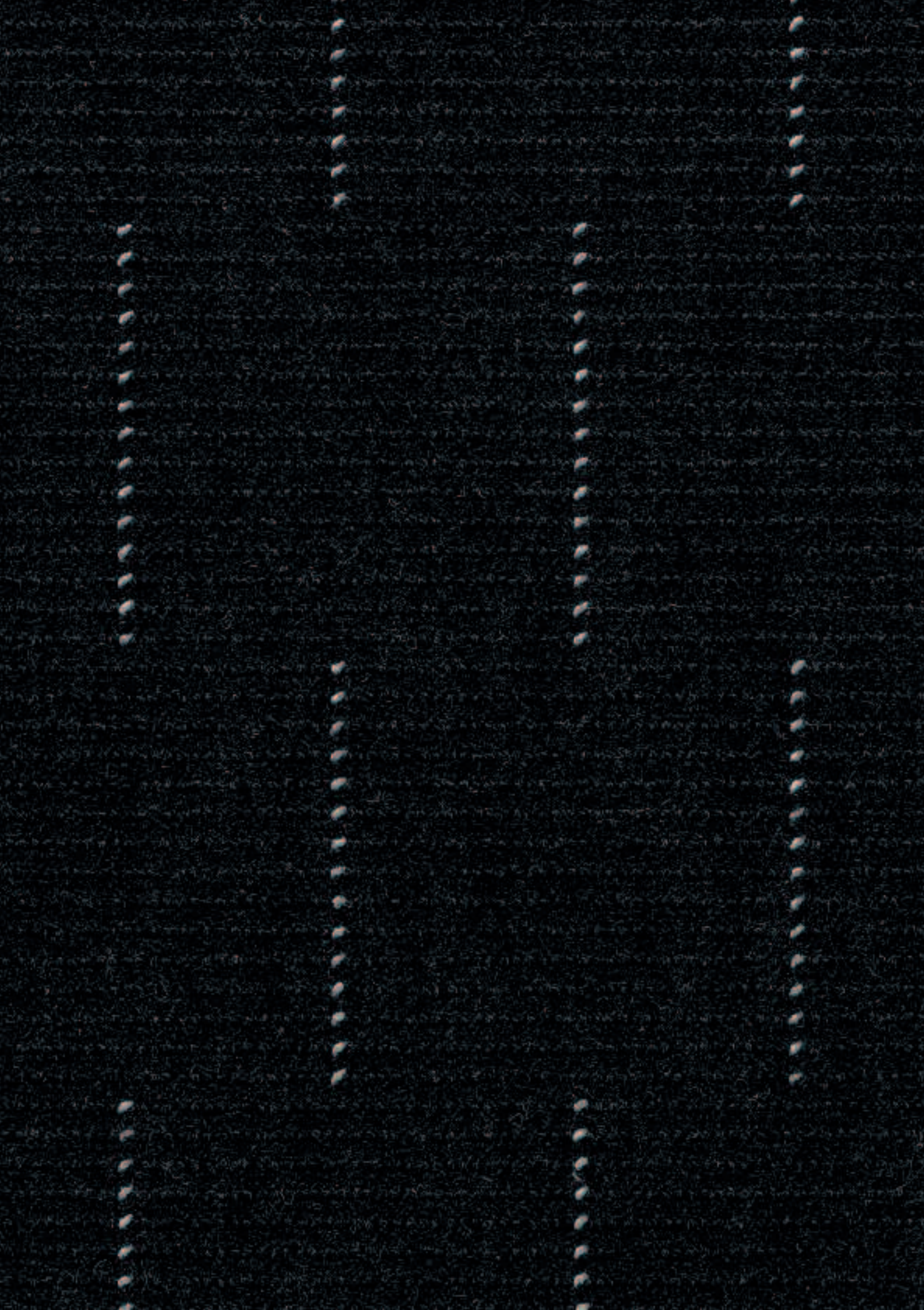
788 blau / 5015 türkis



701 basalt / 5010 beige



402 mocca / 5011 sand



# TISCA COLORMETALLIC / Design 05087 T

Rapport: Länge ca. 470 mm  
Breite ca. 500 mm

rapport: longueur env. 470 mm  
largeur env. 500 mm

repeat: length approx. 470 mm  
width approx. 500 mm

rapporto: lunghezza ca. 470 mm  
larghezza ca. 500 mm



235 schwarz / 170 silber



788 blau / 170 silber



701 basalt / 470 gold



402 mocca / 450 bronce



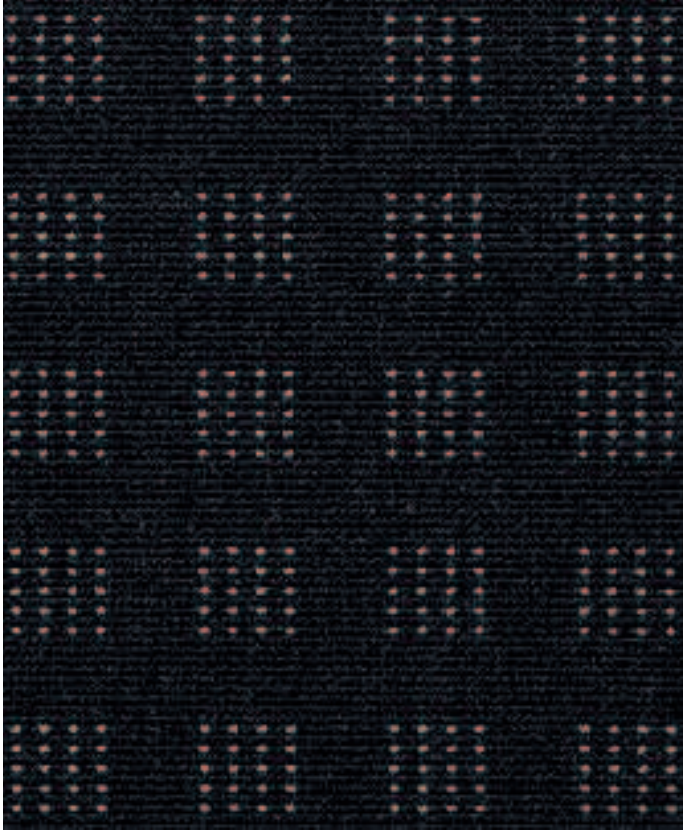
# TISCA COLORMETALLIC / Design 02199 T

Rapport: Länge ca. 60 mm  
Breite ca. 60 mm

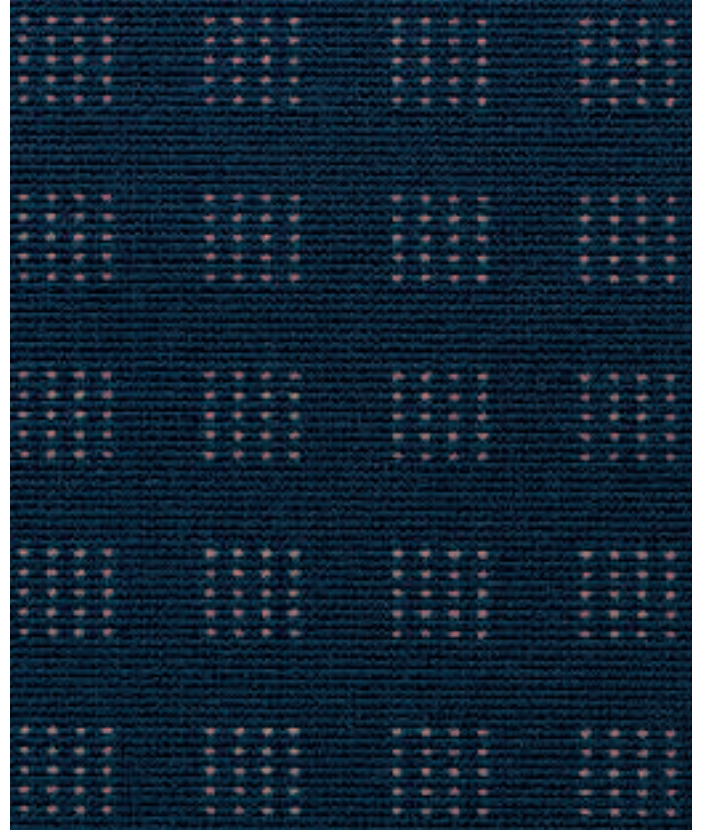
rapport: longueur env. 60 mm  
largeur env. 60 mm

repeat: length approx. 60 mm  
width approx. 60 mm

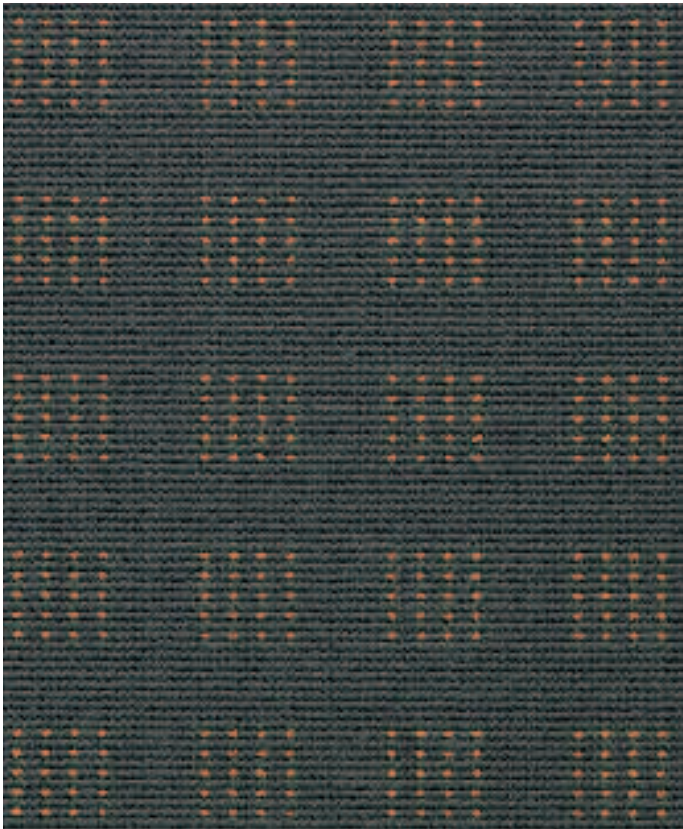
rapporto: lunghezza ca. 60 mm  
larghezza ca. 60 mm



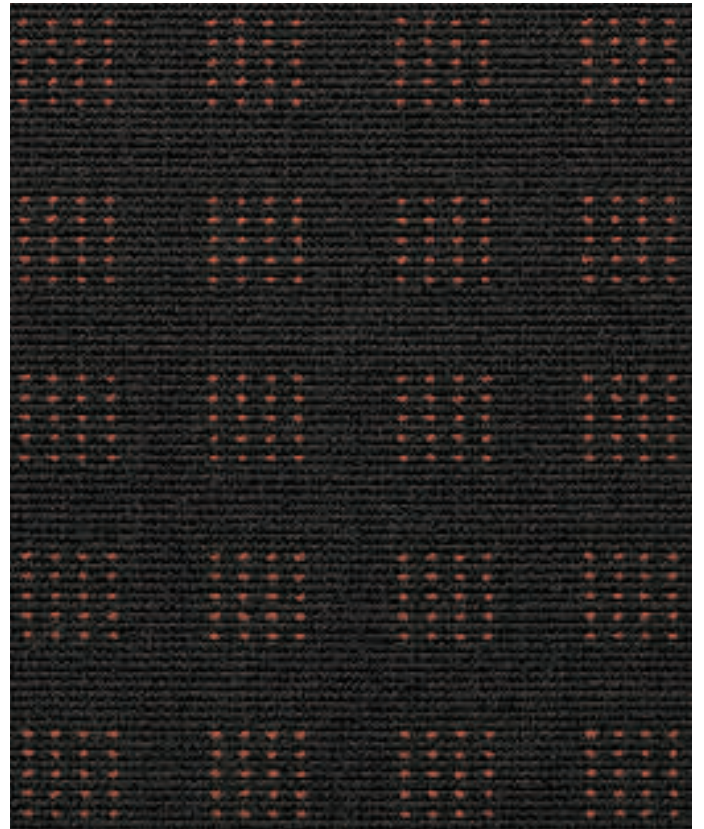
235 schwarz / 170 silber



788 blau / 170 silber



701 basalt / 470 gold



402 mocca / 450 bronce





# TISCA COLORMETALLIC / Design 05244 T

Rapport: Länge ca. 100 mm  
Breite ca. 100 mm

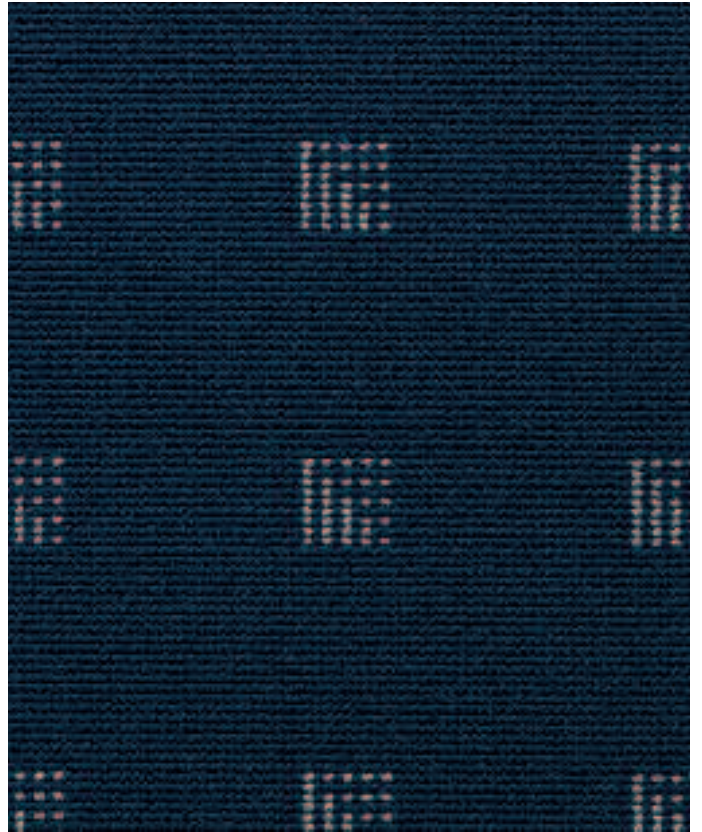
rapport: longueur env. 100 mm  
largeur env. 100 mm

repeat: length approx. 100 mm  
width approx. 100 mm

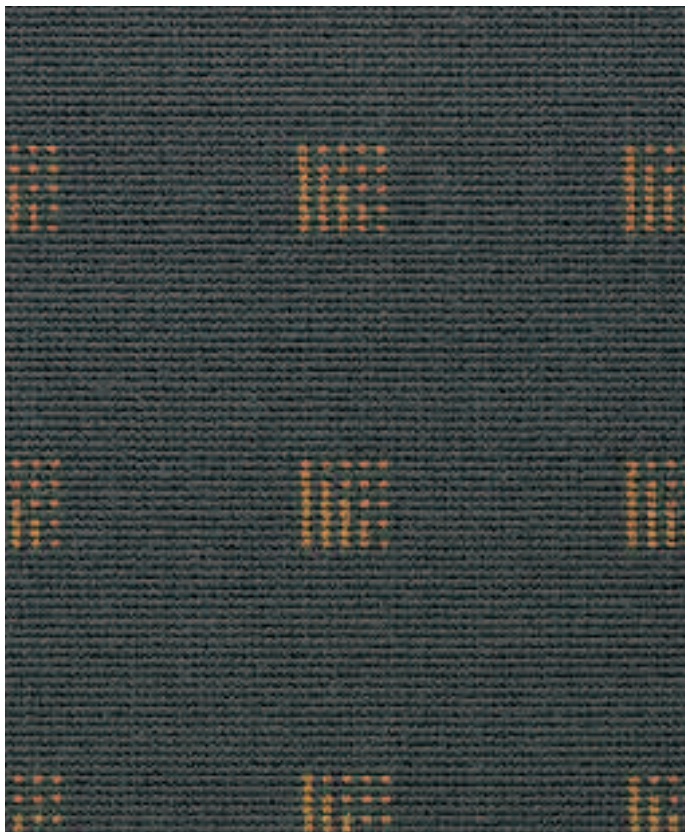
rapporto: lunghezza ca. 100 mm  
larghezza ca. 100 mm



235 schwarz / 170 silber



788 blau / 170 silber



701 basalt / 470 gold



402 mocca / 450 bronce



# TISCA COLORMETALLIC / Design 04133 T

Rapport: Länge ca. 50 mm  
Breite ca. 40 mm

rapport: longueur env. 50 mm  
largeur env. 40 mm

repeat: length approx. 50 mm  
width approx. 40 mm

rapporto: lunghezza ca. 50 mm  
larghezza ca. 40 mm



235 schwarz / 170 silber



788 blau / 170 silber



701 basalt / 470 gold



402 mocca / 450 bronce



# TISCA COLORMETALLIC / Design 04274 TV

Rapport: Länge ca. 40 mm  
Breite ca. 40 mm

rapport: longueur env. 40 mm  
largeur env. 40 mm

repeat: length approx. 40 mm  
width approx. 40 mm

rapporto: lunghezza ca. 40 mm  
larghezza ca. 40 mm



235 schwarz / 708 azur - 5015 türkis



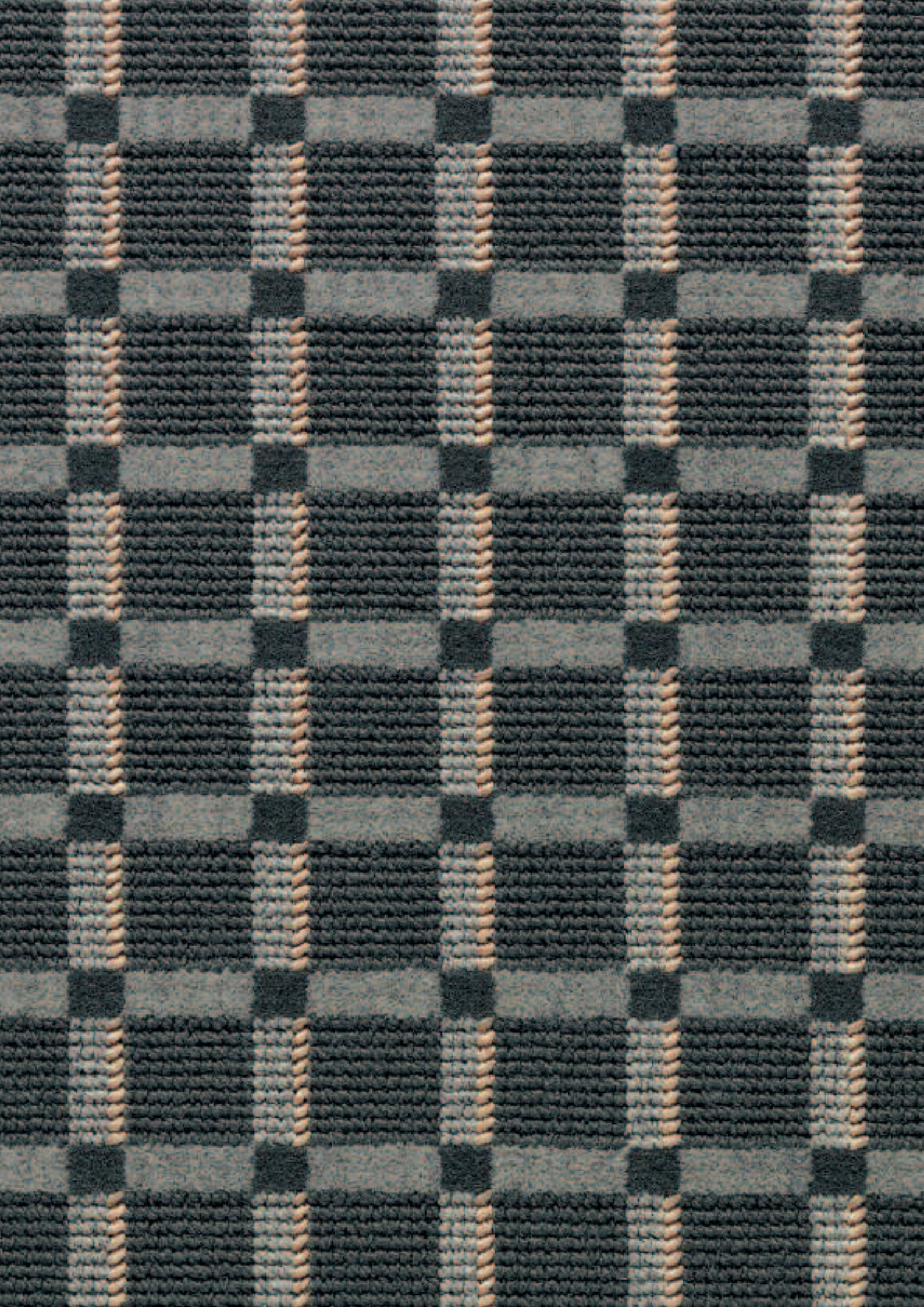
788 blau / 223 perle - 5010 beige



701 basalt / 106 grège - 5010 beige



402 mocca / 472 kork - 5016 orange



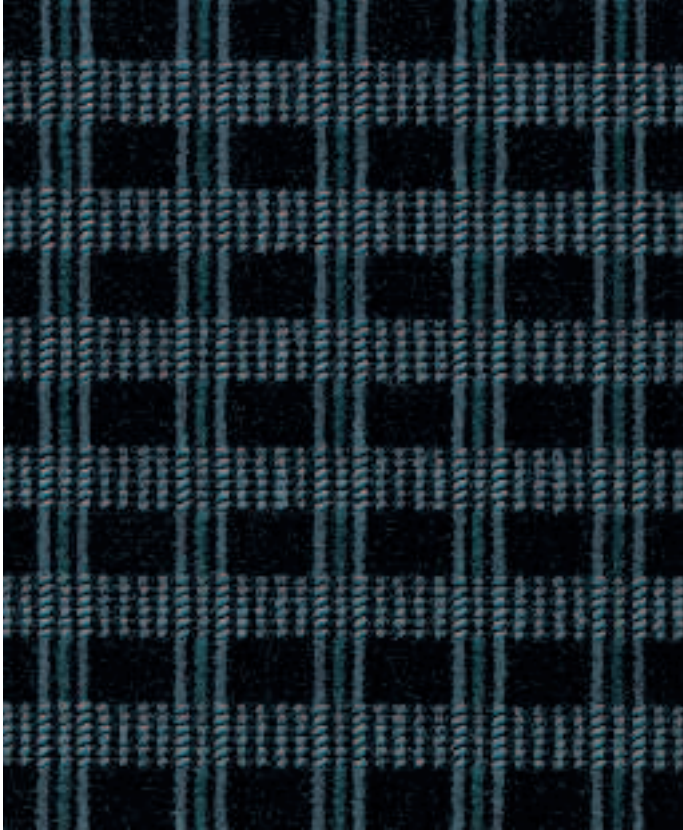
# TISCA COLORMETALLIC / Design 04275 TV

Rapport: Länge ca. 40 mm  
Breite ca. 40 mm

rapport: longueur env. 40 mm  
largeur env. 40 mm

repeat: length approx. 40 mm  
width approx. 40 mm

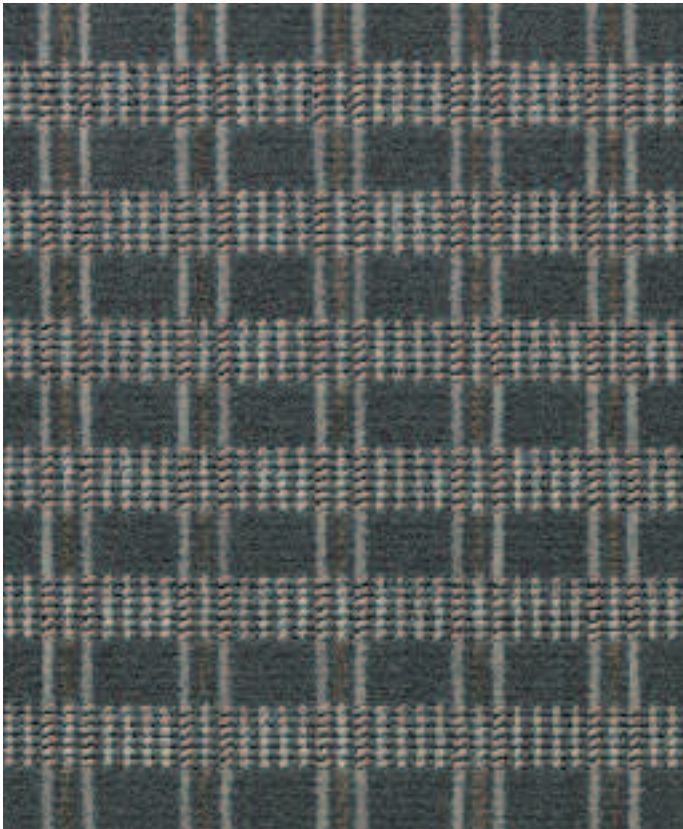
rapporto: lunghezza ca. 40 mm  
larghezza ca. 40 mm



235 schwarz - 5015 türkis / 218 stein



788 blau - 5010 beige / 487 steingrau



701 basalt - 5011 sand / 106 grège



402 mocca - 5016 orange / 564 koralle





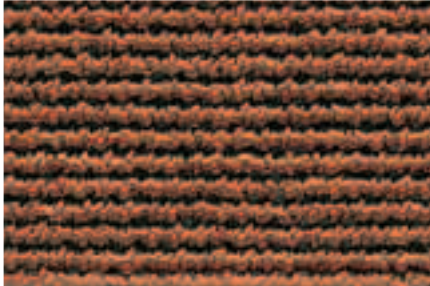
# TISCA COLORMETALLIC

Diese 12 Schmuckfarben können wahlweise für die Dessinierung eingesetzt werden.

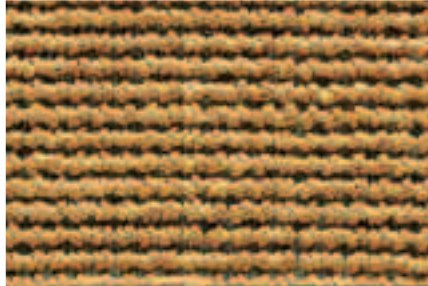
Ces 12 couleurs de décor peuvent être employées au choix pour la réalisation des motifs.

These 12 jewel tones can be selected for the design.

Questi 12 colori della decorazione possono essere utilizzati a scelta per il disegno.



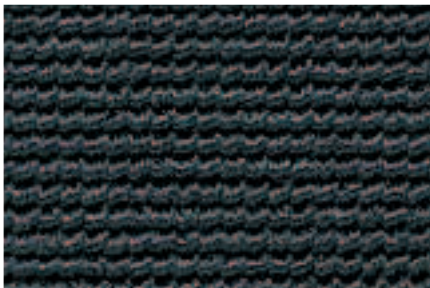
450 bronze



470 gold



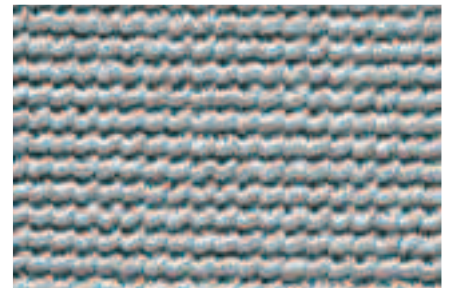
170 silber



5014 dunkelgrau



5013 mittelgrau



5012 hellgrau



5018 blau



5015 türkis



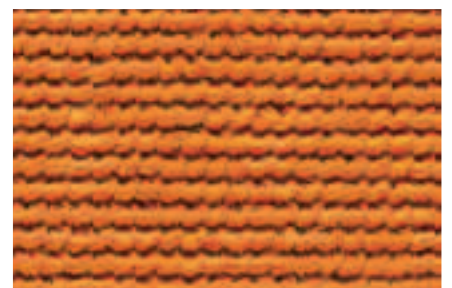
5017 lemon



5011 sand



5010 beige



5016 orange

A: Design 05057 TV 701 basalt / 5010 beige  
B: Design 05244 T 701 basalt / 470 gold  
C: Design 04275 TV 701 basalt - 5011 sand / 106 grège



# TISCA COLORRIPS 410

Aus den 33 Colorits von COLORRIPS 410 kann wahlweise die Fondfarbe bestimmt werden.

La couleur de fond peut être librement définie parmi les 33 coloris COLORRIPS 410.

Any of the 33 colors of COLORRIPS 410 can be selected for the base color.

Con i 33 colori di COLORRIPS 410 è possibile a scelta determinare il colore dello sfondo.



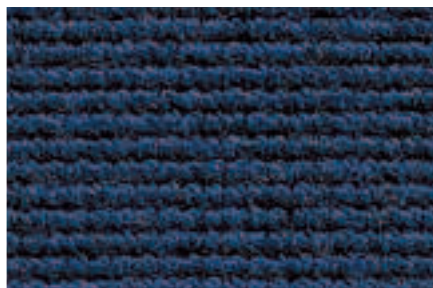
338 kiwi



388 zypresse



706 saphir



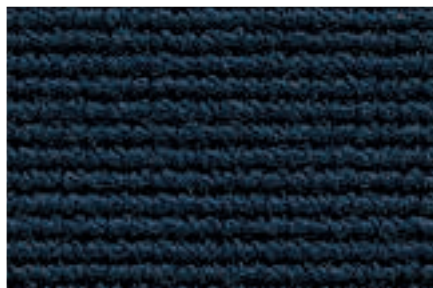
786 royal



750 pfau



707 capri



788 blau



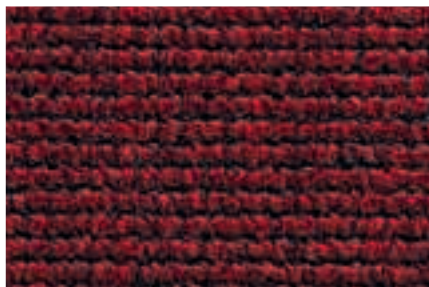
751 orion



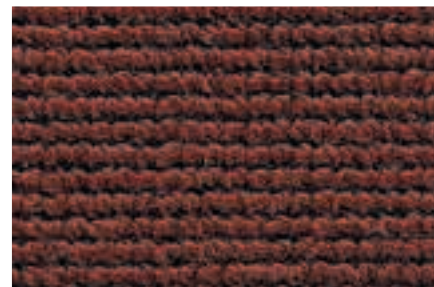
708 azur



525 granat



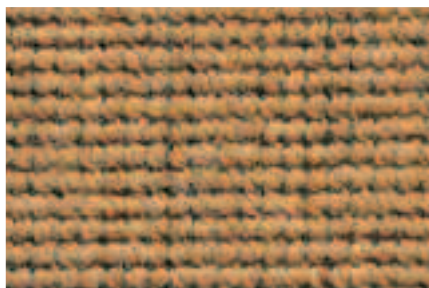
564 koralle



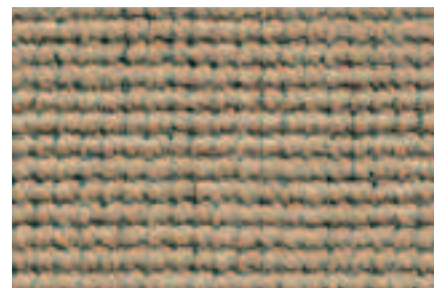
510 rost



905 cotto



626 cognac



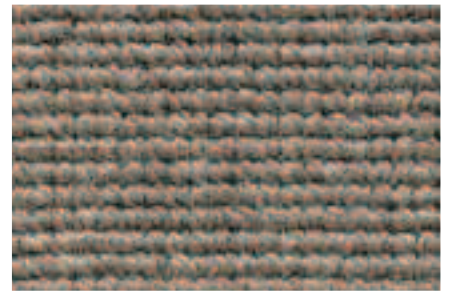
197 sand



402 mocca



472 kork



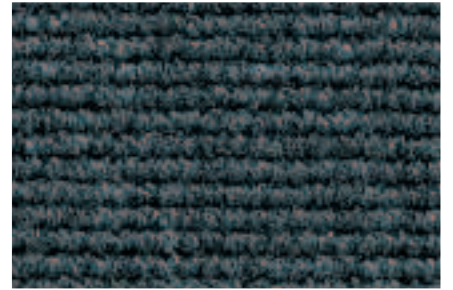
110 bast



235 schwarz



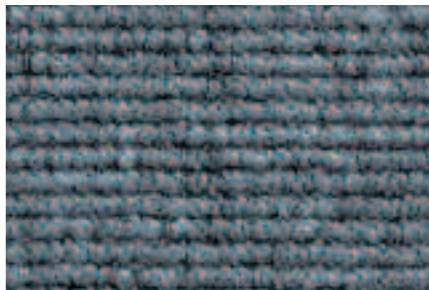
239 schiefer



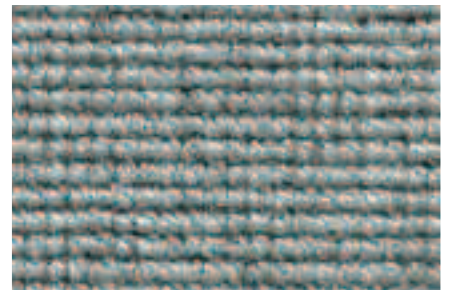
207 anthrazit



276 zinn



218 stein



223 perle



701 basalt



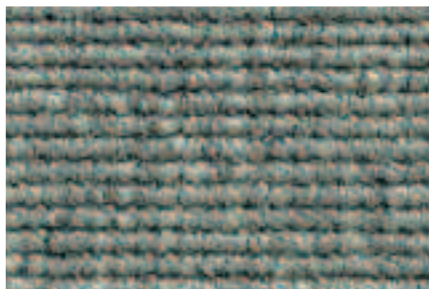
487 steingrau



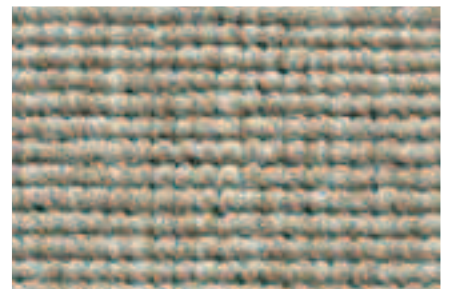
386 zeder



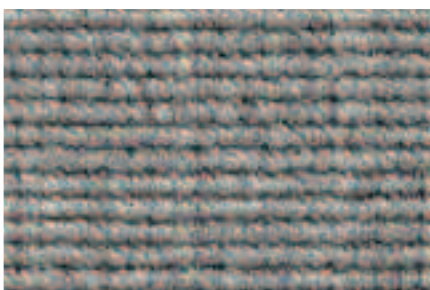
143 düne



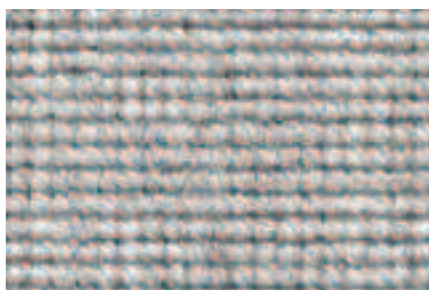
205 quarz



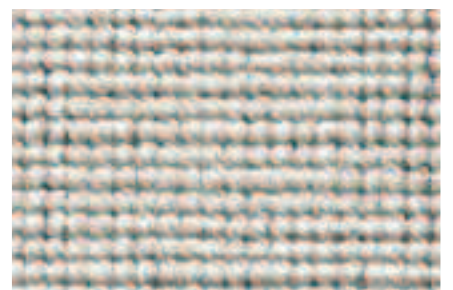
156 hellbeige



106 grège



105 marmor



703 kiesel

# TISCA COLORMETALLIC T/TV



Beanspruchung					Komfort			
T	TV							
extrem	intensiv	stark	mittel	gering	einfach	gut	hoch	luxuriös

EN 1307



## TECHNISCHE DATEN

Einsatzbereich	Arbeiten
Zusatzleistungen	Stuhlrollen, Treppen, Bodenheizung antistatisch
Beanspruchung	T: extrem / TV: intensiv
Komfort	gut / LC2
Herstellungsart	gewebt, mehrfarbig, designt
Oberflächenstruktur	T: Schlinge / TV: Schlingen / Schnittpol mit Metalleffekten
Polmaterial	100% Polyamid, Stapelfaser, Invista ANTRON EXCEL permanent antistatisch
Grundgewebe	synthetisch
Rückenausrüstung	Latex

	COLORMETALLIC T	COLORMETALLIC TV
Poleinsatzgewicht	ca. 750 g/m <sup>2</sup>	ca. 850 g/m <sup>2</sup>
Gesamtgewicht	ca. 1'600 g/m <sup>2</sup>	ca. 1'700 g/m <sup>2</sup>
Polnoppenzahl	ca. 108'000 /m <sup>2</sup>	102'000 /m <sup>2</sup>
Poldicke	ca. 2,0 mm	4,0 mm
Gesamtdicke	ca. 4,0 mm	6,5 mm
ETG Lizenz	Nr. 602366	-
Schadstoffprüfung	GuT Lizenz Nr. 13740	GuT Lizenz Nr. 16181
Brandverhalten	5.3 / EN 13501-1 Cfl - s1	5.3 / EN 13501-1 Cfl - s1
Trittschaldämmung	ca. 20 dB VM	ca. 25 dB VM
Wärmedurchlasswiderstand	ca. 0,06 m <sup>2</sup> • K/W	ca. 0,09 m <sup>2</sup> • K/W
Elektrostatisches Verhalten	≤ 2,0 kV (ISO 6356)	≤ 2,0 kV (ISO 6356)
Elektrischer Widerstand	≤ 10 <sup>8</sup> Ohm (ISO 10965 / IEC 1340)	≤ 10 <sup>8</sup> Ohm (ISO 10965 / IEC 1340)
	bei ableitfähiger Verlegung	bei ableitfähiger Verlegung
Breite / Rollenlänge	ca. 200 cm / ca. 30 lfm	
Mindestmenge	150 m <sup>2</sup>	
Lagerfarben	- Fondfarben: 33, wählbar aus Farbpalette COLORRIPS - Effektfarben: 12	
Sonderfarben	min. 1'500 m <sup>2</sup> (350 - 1'500 m <sup>2</sup> mit Zuschlag)	
Lieferform	Rollen und Coupons in Originalbreite	
Verlegung	Vollflächig kleben. Teppiche für Raumgrößen unter ca. 20 m <sup>2</sup> können mit Klebeband verlegt werden.	
Klebstoffe	TISCA TIARA empfiehlt das COLLANO-Sortiment	

## TECHNICAL DATA

application	contract areas
additional applications	chairs with castors, stairs, floor-heating, antistatic
use	T: extra heavy duty / TV: heavy duty
comfort	good / LC2
construction	woven, multicolored design
texture	T: loop pile / TV: loop / cut pile with metal effect
pile material	100% polyamide, staple fibre, Invista ANTRON EXCEL permanent antistatic
primary backing	synthetic
secondary backing	latex

	COLORMETALLIC T	COLORMETALLIC TV
total pile weight	approx. 750 g/m <sup>2</sup> (22 oz/sq yd)	approx. 850 g/m <sup>2</sup> (25 oz/sq yd)
total weight	approx. 1'600 g/m <sup>2</sup> (47 oz/sq yd)	approx. 1'700 g/m <sup>2</sup> (50 oz/sq yd)
number of tufts	approx. 108'000 /m <sup>2</sup> (90'300 /sq yd)	approx. 102'000 /m <sup>2</sup> (85'300 /sq yd)
pile thickness	approx. 2,0 mm (5/64")	approx. 4,0 mm (5/32")
total thickness	approx. 4,0 mm (5/32")	approx. 6,5 mm (1/4")
ETG licence	no. 602366	-
contaminant test	GuT licence no. 13740	GuT licence no. 16181
flammability	EN 13501-1 Cfl - s1 radiant panel class 1	EN 13501-1 Cfl - s1 radiant panel class 1
impact sound insulation	approx. 20 dB	approx. 25 dB
thermal insulation	approx. 0,06 m <sup>2</sup> • K/W	approx. 0,09 m <sup>2</sup> • K/W
static electricity	≤ 2000 volts (ISO 6356)	≤ 2000 volts (ISO 6356)
earth discharge resistance	≤ 10 <sup>8</sup> Ohm (ISO 10965 / IEC 1340)	≤ 10 <sup>8</sup> Ohm (ISO 10965 / IEC 1340)
	with conductive installation	with conductive installation
width / length of roll	approx. 200 cm (6'7") / 30 m ( 33 yds)	
min. quantity	150 m <sup>2</sup>	
number of colors in stock	- base colors: 33, select from COLORRIPS color palette - effect colors: 12	
special colors	min 1'800 sq yds (400 - 1'800 sq yds with surcharge)	
availability	rolls and cuts	
installation roll goods	glue down / areas smaller than 20 m <sup>2</sup> / 24 sq yds can be installed with double face tape	
adhesives	TISCA TIARA recommends the COLLANO product range	

## DONNÉES TECHNIQUES

domaines d'utilisation	usage professionnel
autres qualifications	roulettes de chaise, escaliers, chauffage au sol, antistatique
classe d'utilisation	T: extrême / TV: intensif
classe de confort	bon / LC2
fabrication	tissé, dessins multicolores
structure de la surface	T: bouclé / TV: bouclé / velours avec effet métal
poil	100% polyamide, fibre coupé, Invista ANTRON EXCEL antistatique permanent
support	synthétique
dos	latex

	COLORMETALLIC T	COLORMETALLIC TV
poils du poil total	env. 750 g/m <sup>2</sup>	env. 850 g/m <sup>2</sup>
poils total	env. 1'600 g/m <sup>2</sup>	env. 1'700 g/m <sup>2</sup>
nombre de points	env. 108'000 /m <sup>2</sup>	env. 102'000 /m <sup>2</sup>
épaisseur du poil	env. 2,0 mm	env. 4,0 mm
épaisseur totale	env. 4,0 mm	env. 6,5 mm
licence ETG	no. 602366	-
substances nocives	licence GuT no. 13740	licence GuT no. 16181
réaction au feu	5.3 / EN 13501-1 Cfl - s1	5.3 / EN 13501-1 Cfl - s1
absorption du bruit des pas	env. 20 dB	env. 25 dB
résistance thermique	env. 0,06 m <sup>2</sup> • K/W	env. 0,09 m <sup>2</sup> • K/W
charge électrostatique	≤ 2,0 kV (ISO 6356)	≤ 2,0 kV (ISO 6356)
résistance électrique à la mise à terre	≤ 10 <sup>8</sup> Ohm (ISO 10965 / IEC 1340)	≤ 10 <sup>8</sup> Ohm (ISO 10965 / IEC 1340)
	avec pose conductible	avec pose conductible
largeur / longueur rouleaux	env. 200 cm / env. 30 m	
quantité min.	150 m <sup>2</sup>	
coloris en stock	- couleurs de fond: 33, à choix, selon la palette de COLORRIPS - effet de couleurs: 12	
coloris spéciaux	min. 1'500 m <sup>2</sup> (350 - 1'500 m <sup>2</sup> prix sur demande)	
mode de livraison	rouleaux et coupons en largeur originale coller en plein / pièces de moins de 20 m <sup>2</sup> peuvent être posées avec bandes adhésives	
encollage	TISCA TIARA vous conseille l'assortiment COLLANO	

## DATI TECNICI

zona di applicazione	uffici
altri utilizzi	sedie a rotelle, scale, pavimenti a pannelli radianti, antistatico
classificazione d'utilizzo	T: estremo / TV: intenso
classificazione di comfort	buona / LC2
fabbricazione	tessuto a disegno con più colori
struttura della superficie	T: bouclé / TV: bouclé / velluto con effetti metallici
composizione felpa	100% poliammide, filo discontinuo, Invista ANTRON EXCEL antistatico permanente
supporto di tessitura	synthetic
rovescio	latex

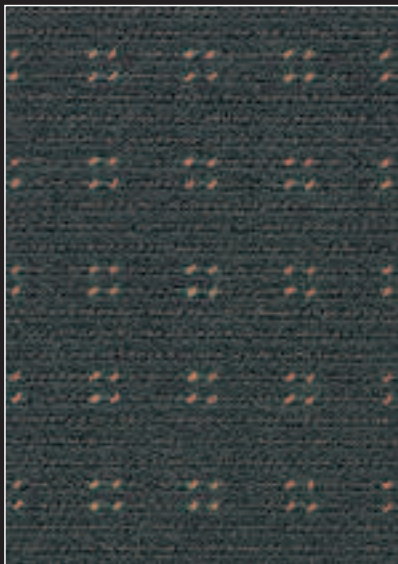
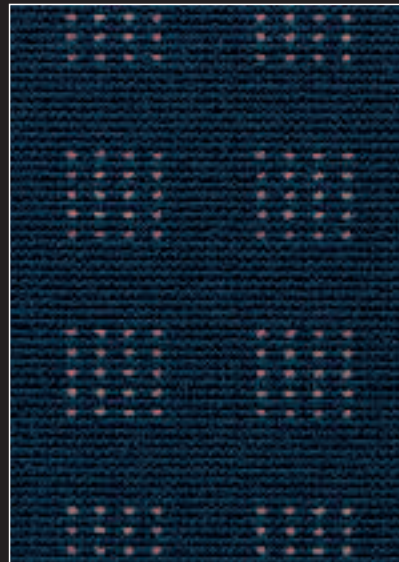
	COLORMETALLIC T	COLORMETALLIC TV
peso felpa totale	ca. 750 g/m <sup>2</sup>	ca. 850 g/m <sup>2</sup>
peso totale	ca. 1'600 g/m <sup>2</sup>	ca. 1'700 g/m <sup>2</sup>
numero punti	ca. 108'000 /m <sup>2</sup>	ca. 102'000 /m <sup>2</sup>
spessore felpa	ca. 2,0 mm	ca. 4,0 mm
spessore totale	ca. 4,0 mm	ca. 6,5 mm
lizenza ETG	no. 602366	-
sostanze nocive	attestato GuT no. 13740	attestato GuT no. 16181
classe reazione al fuoco	5.3 / classe 1 EN13501-1 Cfl-s1	5.3 / classe 1 EN13501-1 Cfl-s1
isol. ai rumori d'impatto	ca. 20 dB	ca. 25 dB
isolamento termico	ca. 0,06 m <sup>2</sup> • K/W	ca. 0,09 m <sup>2</sup> • K/W
carica elettrostatica	≤ 2,0 kV (ISO 6356)	≤ 2,0 kV (ISO 6356)
resistenza di scarico a terra	≤ 10 <sup>8</sup> Ohm (ISO 10965 / IEC 1340)	≤ 10 <sup>8</sup> Ohm (ISO 10965 / IEC 1340)
	con posa conduttiva	con posa conduttiva
larghezza / lunghezza	ca. 200 cm / ca. 30 m	
quantità min.	150 m <sup>2</sup>	
colori in stock	- colore di fondo: 33, a scelta dalla gamma colori COLORRIPS - colori effetto: 12	
colori speciali	min. 1'500 m <sup>2</sup> (350 - 1'500 m <sup>2</sup> prezzo su richiesta)	
disponibile	rotoli e tagli	
posa	incollare totalmente / per locali inferiore a 20 m <sup>2</sup> la posa con nastro biadesivo è possibile	
colla	TISCA TIARA consiglia i collanti COLLANO	



Design 05175 TV 402 mocca / 5011 sand

# TISCA TIARA

swiss  carpets



**TISCA**  
Tischhauser + Co. AG  
CH-9055 Bühler  
Telefon +41 (0)71 791 01 11  
Telefax +41 (0)71 791 01 00  
info@tisca.ch

**TIARA**  
Teppichboden AG  
CH-9107 Urnäsch  
Telefon +41 (0)71 365 62 62  
Telefax +41 (0)71 364 21 03  
info@tiara.ch

**TISCA TIARA**  
Showroom  
Freischützgasse 1  
CH-8004 Zürich  
Telefon +41 (0)44 241 97 10  
e-mail showroom@tisca.ch

[www.tisca-tiara.com](http://www.tisca-tiara.com)