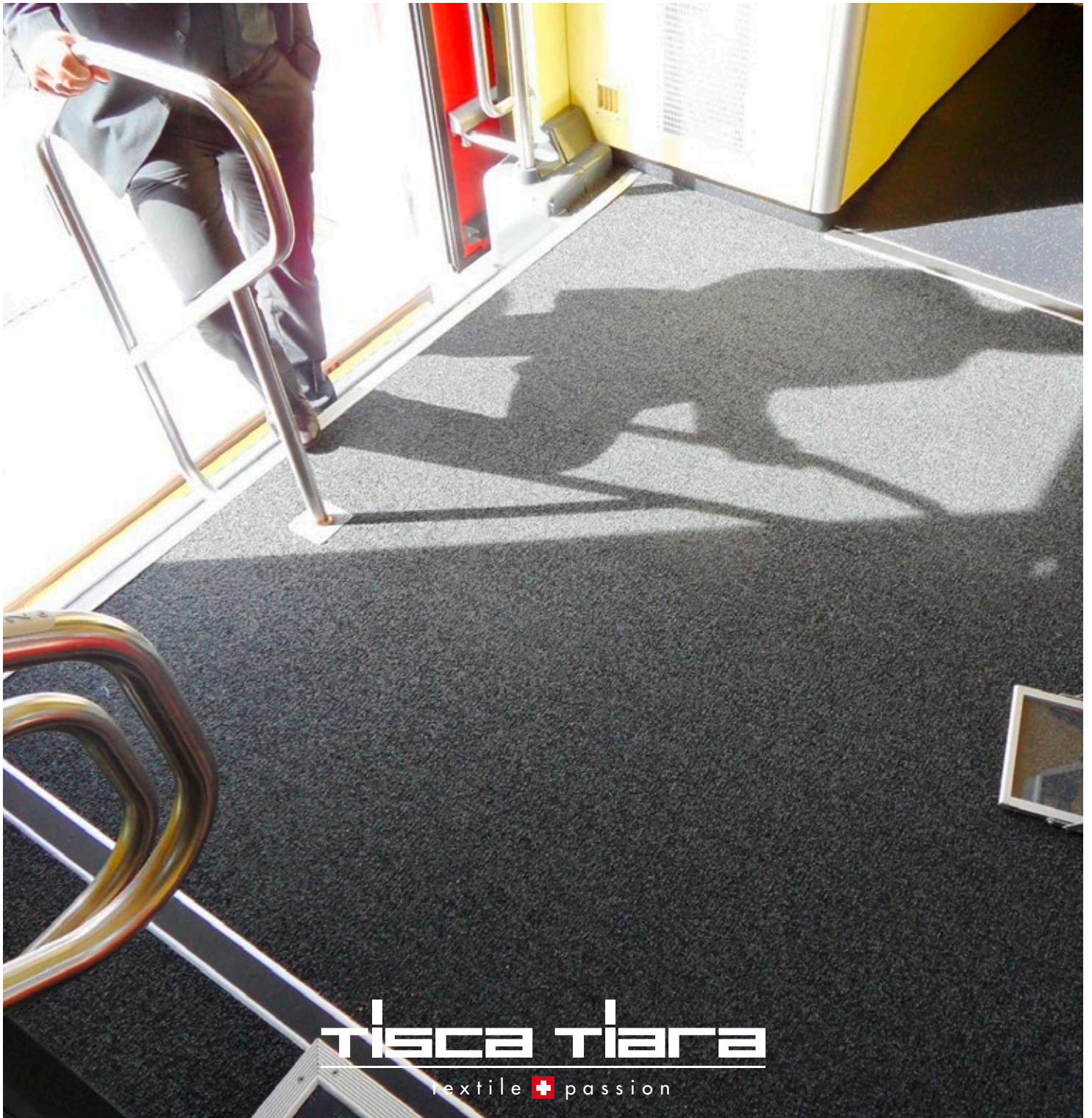


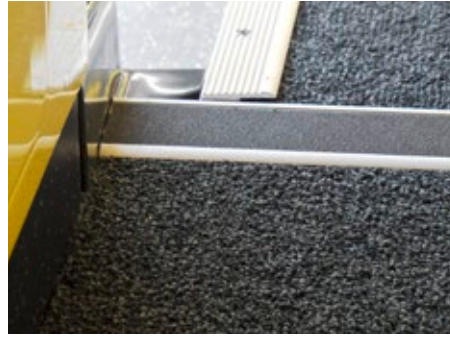
Entrance Matting / Barrier protection systems

Made in Switzerland by TISCA TIARA.



tisca tiara
textile  passion

Entrance Matting / Barrier protection systems



The highest proportion of dirt and moisture is transferred into the carriage by passenger's feet or wheeled traffic such as service trolleys and luggage / suitcases. Using effective entrance matting is therefore important to limit the transfer of contamination at the point boarding the train. TISCA TIARA offers a range of highly functional entrance floorcoverings, specifically developed for passenger rail vehicles:

- **Effective dirt removal and maximum moisture absorption.**
- **By using a specially engineered yarn combination, coarse carpet fibres remove dirt from shoes and luggage while the finer fibres absorb humidity and dust particles.**
- **By preventing dirt and moisture being walked into the cabin, maintenance effort can be more effectively controlled at the point of entry for easy removal during regular cleaning.**
- **This eliminates subsequent soiling of interior floor coverings helping to maintain a cleaner environment for passengers and reducing maintenance effort inside the train car.**
- **Extreme durability and optimal functionality demonstrate our ultimate performance characteristics**
- **Various collections with a choice of colours and designs are available from stock**
- **Offered as carpet rolls or as pre-cut, ready-to-install pieces**

As a true all-inclusive manufacturer, TISCA TIARA mobility textiles designs, develops and produces all sorts of premium quality carpets, fabrics and curtains in harmonized designs and colors for the complete cabin interior furnishing under one roof. Made in Switzerland:

- Carpets
- Entryway flooring products, entrance clean off systems
- Pre-cut, ready-to-install carpets
- Seat cover fabrics
- Curtain fabrics
- Sidewall and head-rest fabrics
- Steam-pleated, ready-to-install curtains

We offer customized products and solutions for the railway, aircraft and other transportation business.

Founded in 1940, the family owned and family run TISCA TIARA group has grown to become one of the most prominent and leading manufacturers of mobility, contract and home textiles.